

# #1

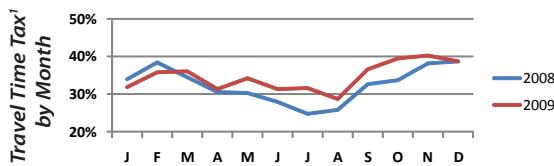
# Los Angeles Metropolitan Area

**National Congestion Rank: #1**

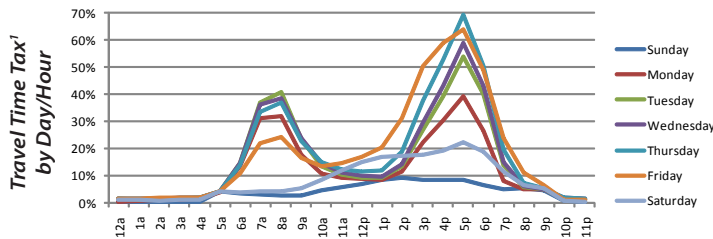
**Population Rank: #2 (12,873,000)**

### Trends Year-to-Year for Peak Period<sup>2</sup> Congestion in Metro Area

	2009	2008	2007	2006
<b>National Congestion Rank</b>	1	1	1	1
<b>Travel Time Tax™<sup>1</sup></b>	35%	32%	45%	44%
- Rank	1	2	2	1
- Change (from referenced year to 2009)	—	+7%	-23%	-21%

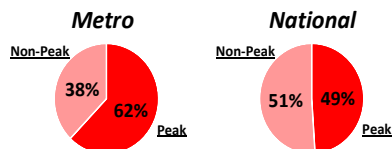


### Patterns for 2009 Congestion in Metro Area



**What Was the Worst Hour?** Thursday, 5-6 PM [69% Travel Time Tax<sup>1</sup>]

**How Much Congestion Was Peak<sup>2</sup> vs. Non-Peak Period?**



CBSA<sup>4</sup>: Los Angeles-Long Beach-Santa Ana CA

### Impact of 2009 Peak Period<sup>2</sup> Congestion

For a One-Way, Uncongested, Peak Period <sup>2</sup> Commute of...	Los Angeles Metro			National		
	AM	PM	Total	AM	PM	Total
15 Minutes	15.7	27.7	43.4	4.4	6.7	11.1
30 Minutes	31.4	55.3	86.8	8.7	13.4	22.1
60 Minutes	62.9	110.7	173.5	17.4	26.8	44.3

### Bottlenecks

across Metro Area in 2009

**What Was the Worst Place and Time?** Harbor Fwy/CA-110 NB @ 8th Street/Exit 22, Thursday 5-6 PM [6 mph average speed / 0.35 mile segment]

Bottleneck Rank	Regional		Road/Direction	Segment/Interchange	County	State	Length (miles)	Hours of Congestion <sup>3</sup>	Average Speed when Congested <sup>3</sup> (mph)
	2009	2008							
1	7	13	Hollywood Fwy/US-101 NB	LOS ANGELES ST	Los Angeles	California	0.10	85	14.0
2	11	10	Hollywood Fwy/US-101 SB	VERMONT AVE	Los Angeles	California	0.62	82	15.4
3	12	16	Hollywood Fwy/US-101 NB	ALAMEDA ST	Los Angeles	California	0.27	82	14.0
4	16	36	Pasadena Fwy/CA-110 NB	SUNSET BLVD/EXIT 24A	Los Angeles	California	0.21	45	10.4
5	19	19	Hollywood Fwy/US-101 NB	SPRING ST	Los Angeles	California	0.14	82	16.1
6	22	18	Hollywood Fwy/US-101 SB	MELROSE AVE	Los Angeles	California	0.35	72	16.5
7	24	30	Hollywood Fwy/US-101 SB	CA-2/SANTA MONICA BLVD	Los Angeles	California	0.40	62	15.1
8	27	23	Harbor Fwy/I-110 NB	ADAMS BLVD	Los Angeles	California	0.13	67	16.6
9	29	27	Hollywood Fwy/US-101 SB	SILVER LAKE BLVD	Los Angeles	California	0.42	78	19.4
10	31	33	Hollywood Fwy/US-101 SB	NORMANDIE AVE	Los Angeles	California	0.40	68	17.5

**Notes:**  
 1 - **Travel Time Tax** is the percentage of extra travel time (vs. "free flow") a random trip takes in the specific region and time period analyzed. A 10% tax means 10% additional trip time due to congestion.  
 2 - **Peak hours** are Monday to Friday, 6 to 10 AM and 3 to 7 PM.  
 3 - **"Hours of Congestion"** is defined as times of the week when a road segment's average hourly speed is half or less than its uncongested speed.  
 4 - **CBSA** stands for "Core Based Statistical Area," the official term for a functional region based around an urban center of at least 10,000 people, based on standards published by the U.S. Government's Office of Management and Budget (OMB).  
 Additional information on the methodologies used in this report are available at <http://scorecard.inrix.com>.